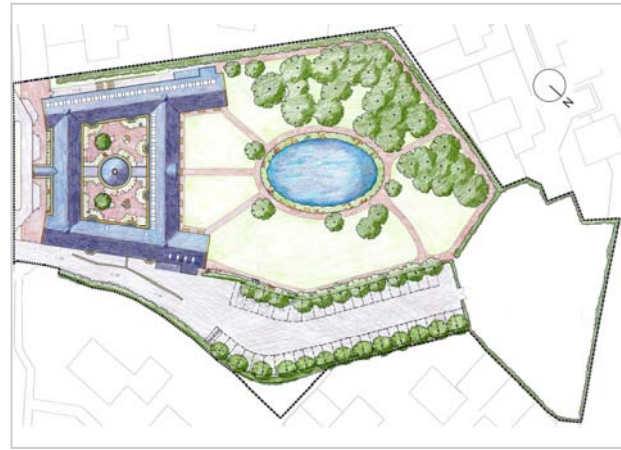
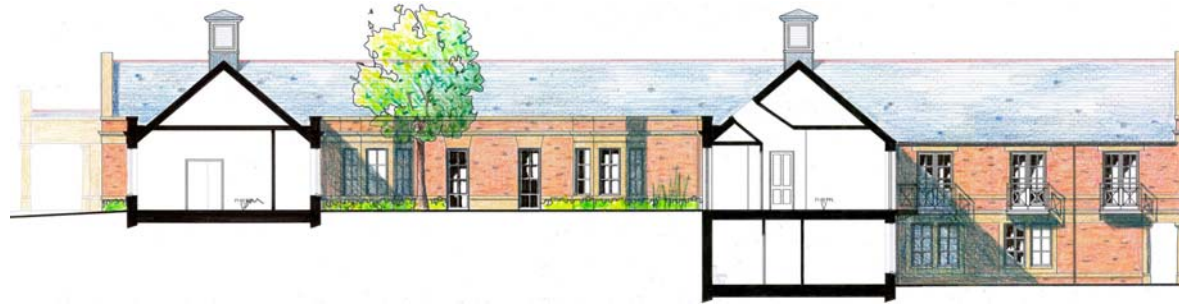


Rotunda



*Do not stand at my grave and weep
 I am not there; I do not sleep.
 I am a thousand winds that blow,
 I am the diamond glints on snow,
 I am the sun on ripened grain,
 I am the gentle autumn rain.
 When you awaken in the morning's hush
 I am the swift uplifting rush
 Of quiet birds in circled flight.
 I am the soft stars that shine at night.
 Do not stand at my grave and cry,
 I am not there; I did not die.*

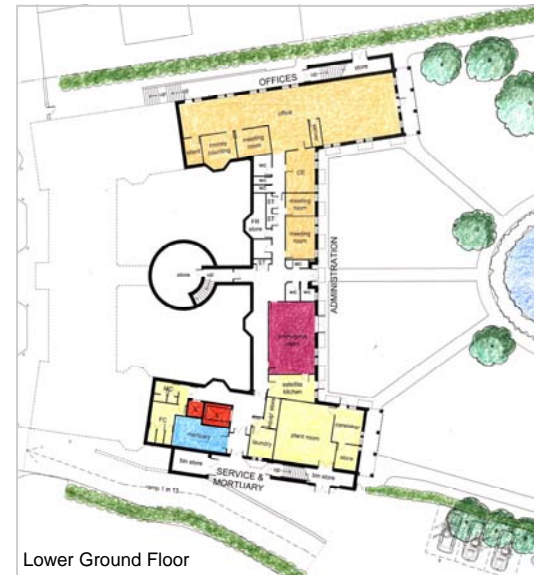
Mary Frye



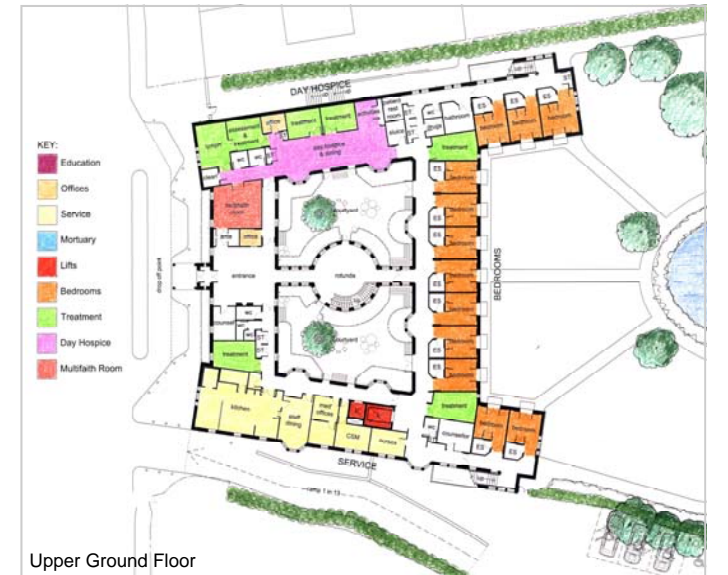
Entrance Hall



This design won a limited architectural competition promoted by The Prince's Foundation and The King's Fund in February 2009. The main design objective was to integrate the hospice with its natural environment by bringing light, fresh air and greenery into the plan. So the building is arranged around two generous landscaped courts and overlooking the garden, and as all deep planning is avoided, there are no internal corridors. By locating the new hospice very close to the street frontage, most of the site is opened up for landscape, the garden can be screened by trees from the neighbouring properties and a duck pond can be introduced so bringing birdsong into the building. It is planned to construct the new building alongside the existing, ensuring that the service can continue uninterrupted by the construction process.



Lower Ground Floor



Upper Ground Floor

THE PRINCE OF WALES HOSPICE, PONTEFRACT